

Salt Lake Community College in partnership with the Utah Division of Facilities Construction and Management and the Utah Arts & Museums' Public Art Program requests artist or artist team qualifications for the creation of site specific artwork(s) for the Salt Lake Community College Juniper Building on the Herriman Campus-

DEADLINE FOR SUBMITTAL: April 8, 2022

THE SLCC JUNIPER BUILDING

The Juniper Building at the Herriman Campus is an innovative collaboration between Salt Lake Community College and the University of Utah to open Fall 2023, in Herriman, the heart of one of the fastest growing communities in the state. This will be the first of many facilities on the new campus at South Sentinel Ridge Blvd and W Real Vista Drive in Herriman.

Through a partnership, SLCC and the University of Utah will educate and train students to join the workforce in the burgeoning southwest quadrant of the Salt Lake Valley, providing critical support to growing businesses and industries in the area.

At the Juniper Building and across the Herriman Campus, students will ease into college life with a high-demand, two-year certificate or associate's degree from SLCC and wrap up their higher education journey with a bachelor's or graduate degree from the University of Utah - all in one place. The two institutions worked together to identify programs for industries with high demand in Utah, like teaching, software engineering, business and nursing.

It is anticipated enrollment for the new campus will start with 2,125 students in 2023 and grow to 6,750 students in 2025. The campus will have 12 programs between the community college and the university by 2025. Students will be able to earn SLCC associate degrees and baccalaureate degrees from the University of Utah on site.

The 90,000-square-foot, classroom-focused building that will open in 2023 will be the first of many facilities planned for the campus. The site's master plan is designed to connect with the city's existing trail system. The plan will be adjusted based on enrollment and program needs.



THE ART SELECTION COMMITTEE STATEMENT

The Art Selection Committee is interested in working with an artist(s) that understands this pride of place and the earnest desire to serve the community. This contemporary facility deserves site specific public art that is part of and communicates these qualities to the students and the community at large.

This inaugural facility establishes this new campus and proudly announces itself to the community and the students it serves. The Art Selection Committee has expressed an interest in both “place making” for the community and creating space / place that adds to the experience for the students.

The Art Selection Committee has not identified specific sites for the art’s interaction and are open to artist suggested sites as envisioned by the artist and has the potential for the most public experience.



Salt Lake Community College is Utah's largest college with the most diverse student body. It serves more than 60,000 students on 10 campuses and with online classes

SLCC VISION

Salt Lake Community College will be a model for inclusive and transformative education, strengthening the communities we serve through the success of our students.

SLCC MISSION

Salt Lake Community College is your community college. We engage and support students in educational pathways leading to successful transfer and meaningful employment.

SLCC VALUES

We don't just state our values; we live them through dedicated, collective effort. Our values ground our future endeavors and help us realize our mission of being an open-access, comprehensive community college committed to the transfer education and workforce needs of our students.

Collaboration

We believe we're better when we work together.

Community

We partner with our community in the transformative, public good of educating students.

Inclusivity

We seek to cultivate an environment of respect and empathy, advanced by diverse cultures and perspectives.

Learning

We learn as a college by building outstanding educational experiences for students and by supporting faculty and staff in their professional development.

Innovation

We value fresh thinking and encourage the energy of new ideas and initiatives.

Integrity

We do the right things for the right reasons.

Trust

We build trust by working together in good faith and goodwill to fulfill the College's mission.

HERRIMAN CITY

<https://www.herriman.org/>

Herriman City, encompassing 23 square miles, is located 20 miles southwest of Salt Lake City and 8.7 miles east of the Bingham Copper Mine at the base of the eastern slopes of the Oquirrh Mountains. It is a master-planned community balancing small-town appeal while encouraging economic development opportunities.

It is one of the fastest growing cities in Utah, with a 78% growth rate over the last five years. The population in 2020 was just over 63,000.



BUDGET

\$165,000 is available for all related expenses of this Public Art commission(s) including (but not limited to) artist fees, fabrication, insurance, shipping, travel, installation, documentation, etc.

ELIGIBILITY

This project is open to American legal / resident professional artists. The Art Selection Committee members and immediate families, employees or consultants of AJC Architects, Utah Arts & Museums Staff and Board and the contracted construction company are not eligible for this project.

SUBMISSION OPTIONS, INSTRUCTIONS AND REQUIRED MATERIALS

Interested artists may submit applications online as described below.

- Register at www.callforentry.org and follow the directions for registration and submitting material for this Public Art Request for Qualifications.

This online application process will prompt you for all necessary documents and information.

To request an accommodation, please contact our Accessibility Coordinator at mmileham@utah.gov or 801.236.7552 at least two weeks in advance of the April 8 deadline.

Utah Arts & Museums will not be responsible for applications delayed or lost in transit. While all reasonable care will be taken, neither the Utah Division of Arts & Museums nor the SLCC Herriman Campus Art Selection Committee will be liable for late, lost or damaged materials or electronic files. Faxed or e-mailed applications cannot be accepted.

The SLCC Herriman Campus Art Selection Committee reserves the right to withhold the award of a commission or re-release the call for entries.

DEADLINE

Complete application must be submitted via CaFE.org by 11:59 pm Mountain Time on April 8, 2022.

SELECTION PROCESS AND SCHEDULE

The Art Selection Committee will review all material properly submitted. Finalists will be selected from the first phase of applicants submitting qualifications. Selection of the commissioned artist(s) will be based on proposals presented to the Art Selection Committee on June 21, 2022.

Once an artist(s) is selected as a finalist, we will work to provide as much information as possible to assist in research while developing the proposal.

An honorarium will be offered to the finalists to assist with the costs associated with the preparation of a proposal and travel. This honorarium will be applied toward the commission amount for the artist(s) awarded the commission.

Schedule:

April 8, 2022 – Deadline for receipt of preliminary materials
April 26, 2022 – Committee Review & Notification of Finalists
June 21, 2022 – Finalists presentations / interviews
September 2023 – Project substantial completion

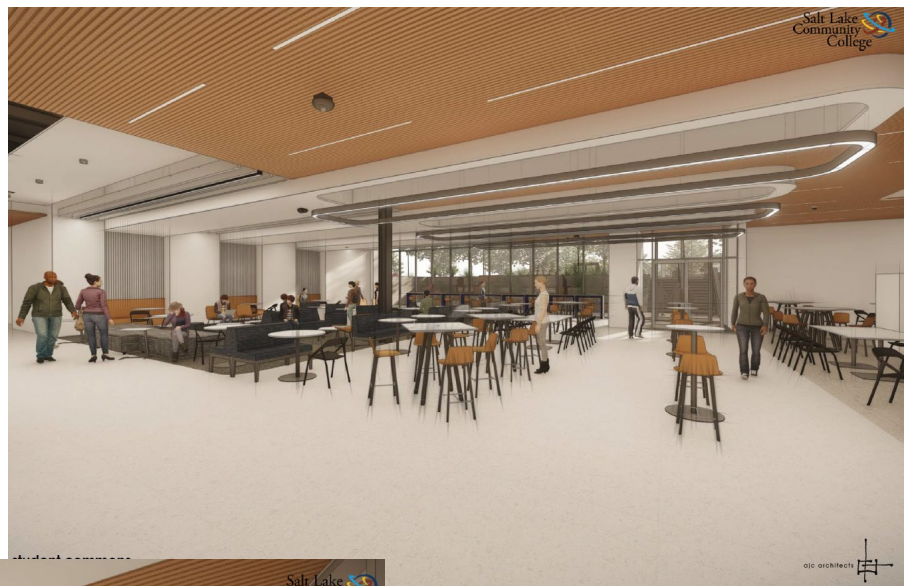
SLCC HERRIMAN ART SELECTION COMMITTEE

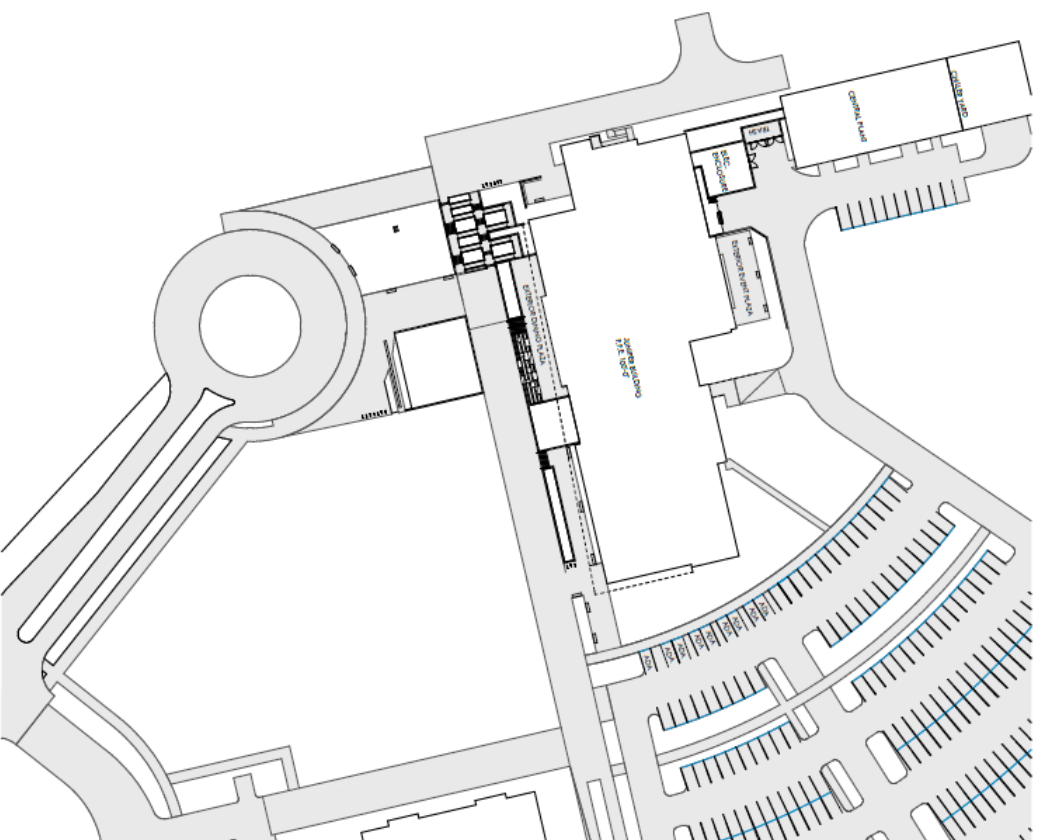
Robert AdamsonSLCC Professor of Art
Jessica Davenport.....SLCC Director Planning & Design
Ashley Greenwood... Division of Facilities Construction & Management Project Manager
Nancy RiveraUtah Arts & Museums, Visual Arts Coordinator
Steve Simmons.....AJC Architects
Connor Stephens.....AJC Architects
James Walton.....SLCC Art Collection Specialist

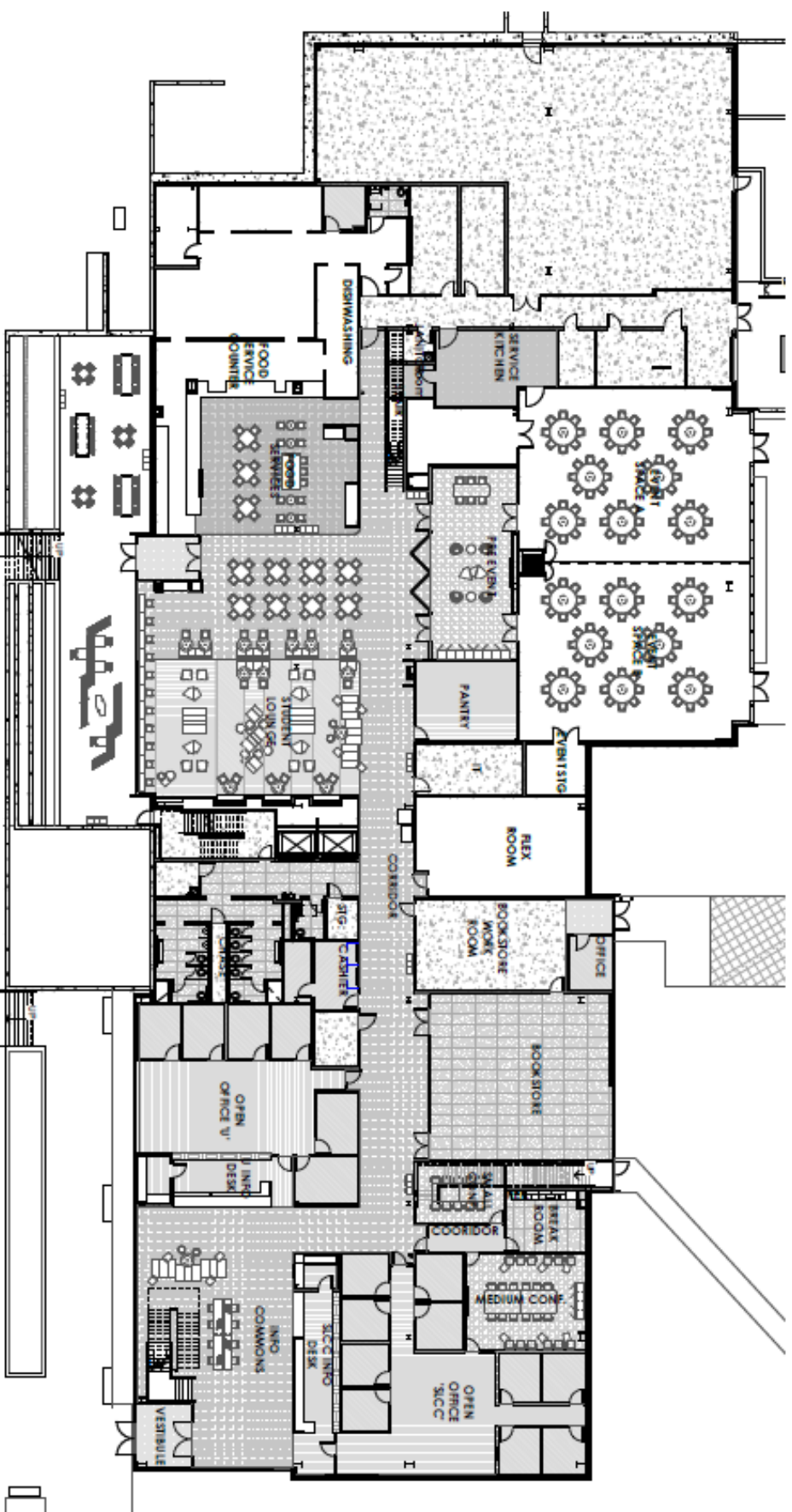
If you have any questions about this or other projects information is available at: <https://artsandmuseums.utah.gov/publicart/>
or contact Jim Glenn at 801-245-7271 or e-mail at: jglenn@utah.gov

Images courtesy of AJC Architects & SLCC

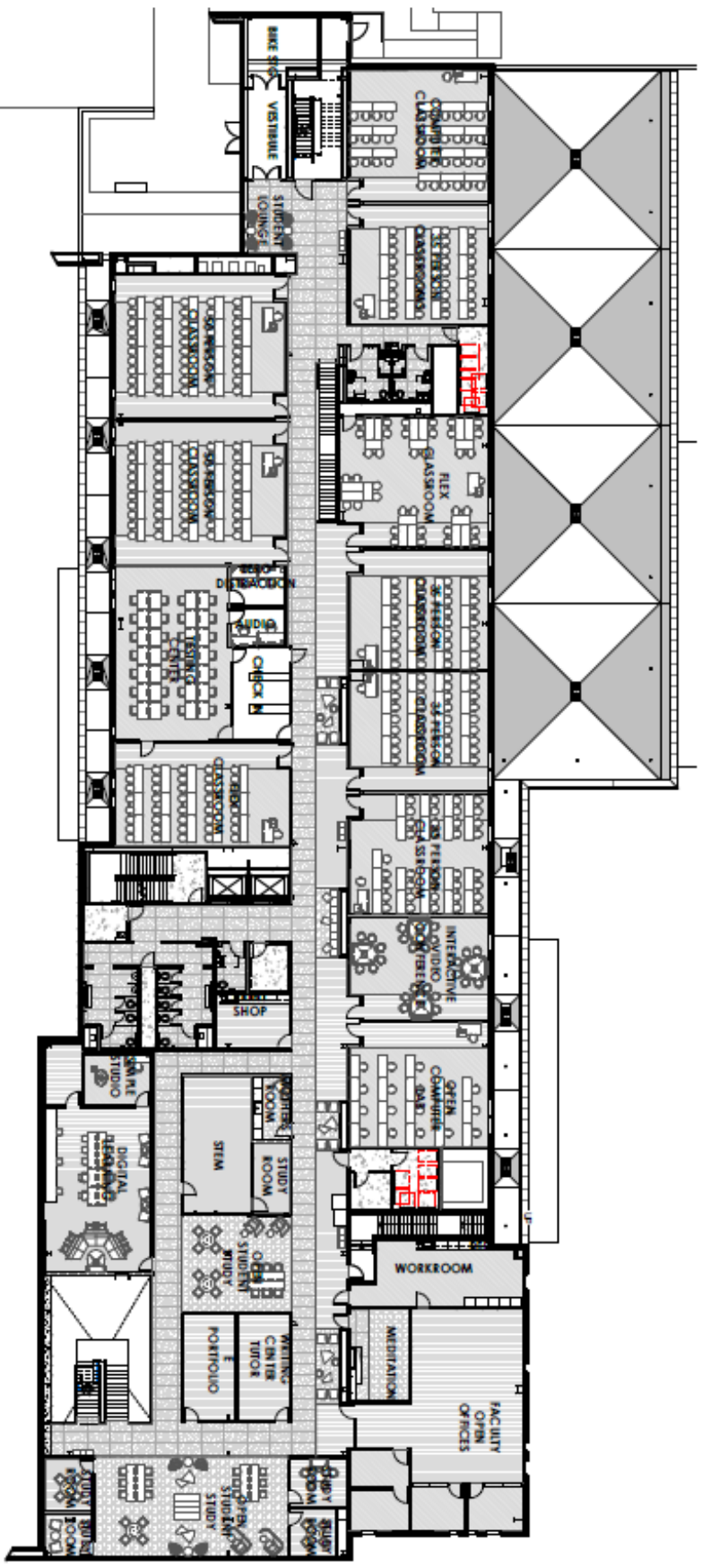




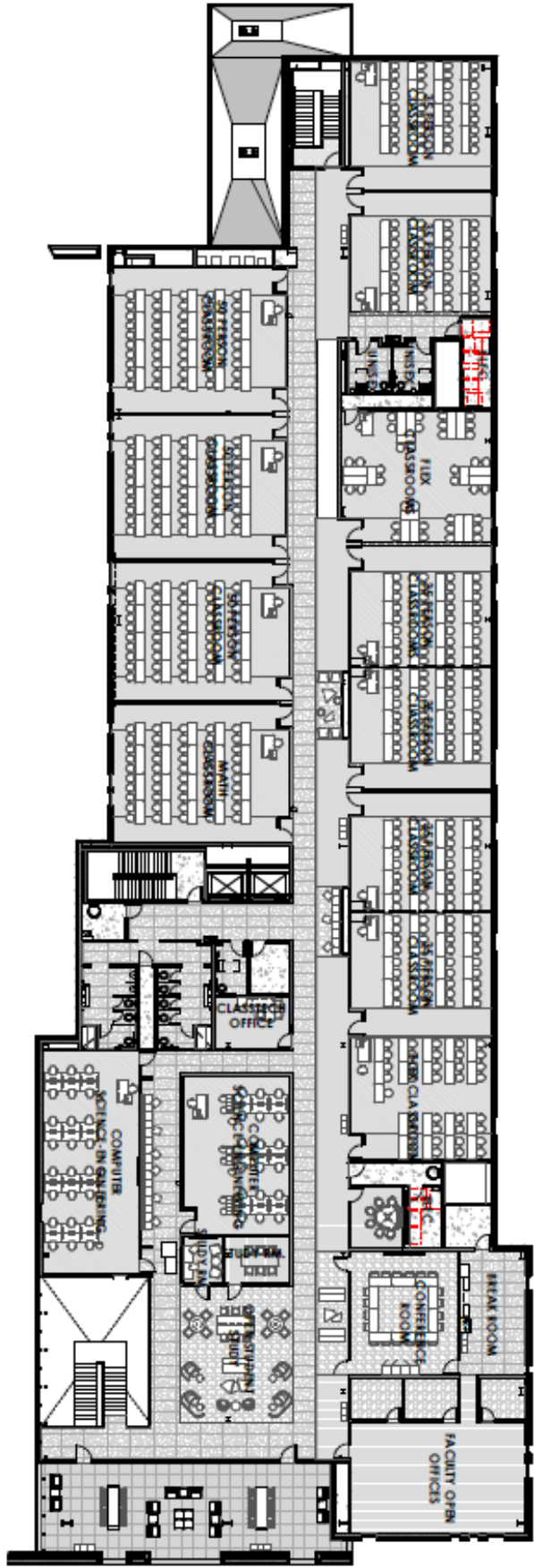




1st level
SLCC Herriman Campus | Juniper Building



2nd level
SLCC Herriman Campus | Juniper Building



3rd level
SLCC Herriman Campus | Juniper Building